

**datacolor** 

Spyder Checkr Video

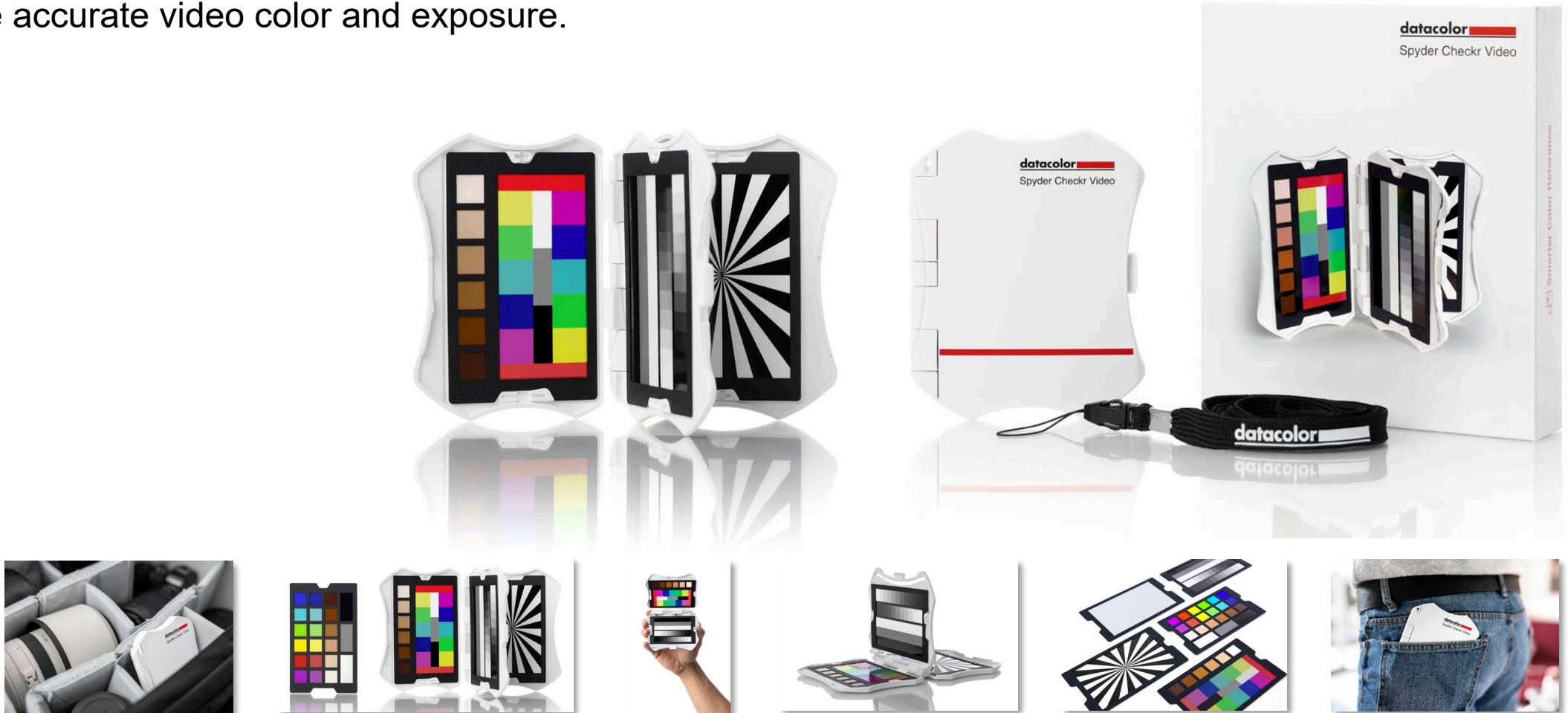
# Quick Start Guide



# Welcome to Spyder Checkr Video

**datacolor**   
*Get Color Right*

Spyder Checkr Video is a color reference chart that works with video vectorscopes, waveform monitors and professional video editing software such as DaVinci Resolve, Adobe Premiere and Final Cut Pro, to ensure accurate video color and exposure.



# About this Item

- An advanced color reference tool for video that works with vectorscopes and waveform monitors to help ensure color accuracy and consistency across a range of cameras, lenses and sensors from the start of shooting, simplifying and facilitating post-production color correction.
- Datacolor's **patent-pending** color pattern card leverages how video is processed, providing more color information to the user at a glance for greater, easier color accuracy that is intuitive for video novices and professionals alike.
- Includes 5 high-gloss target cards - 2 types of color cards for different workflows, gradient grey scale, solid grey card for white balance and a focus star card. Glossy cards allow for high color saturation, greater color gamut, plus easier flare identification.
- Cards are replaceable and interchangeable with Spyder Checkr Photo for photo/video hybrid workflows.
- Ergonomic case design fits comfortably and securely in the hand, minimizing fatigue and handling errors.

**datacolor**   
*Get Color Right*



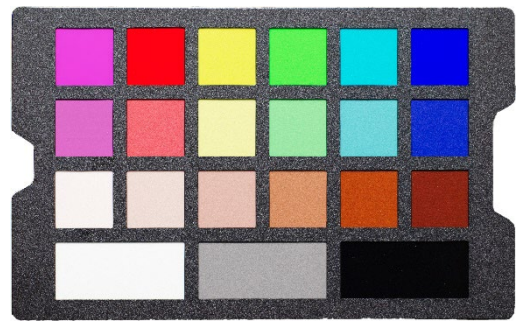


# Spyder Checkr Video Card System

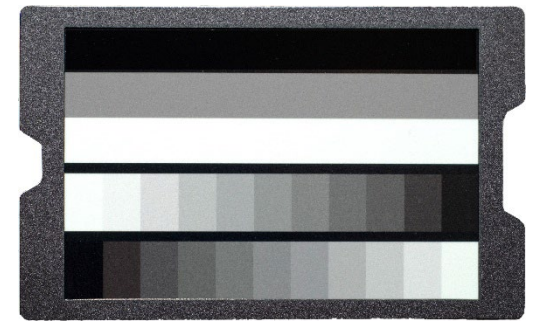
---



• Color Pattern Card



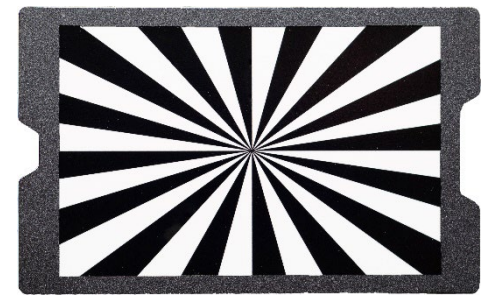
• Color Patch Card



• Greyscale Card



• Grey / White Balance



• Focus Star

# Best practices for image capture

---

- When shooting the Spyder Checkr Video, we recommend holding the color and gray cards in the following orientation.
- Holding the cards in this orientation displays color, exposure and contrast information in an easy-to-read format
- If the cards were captured at another angle, they can be rotated in post using your Non-linear editing (NLE)/video editing software



# Best practices for image correction

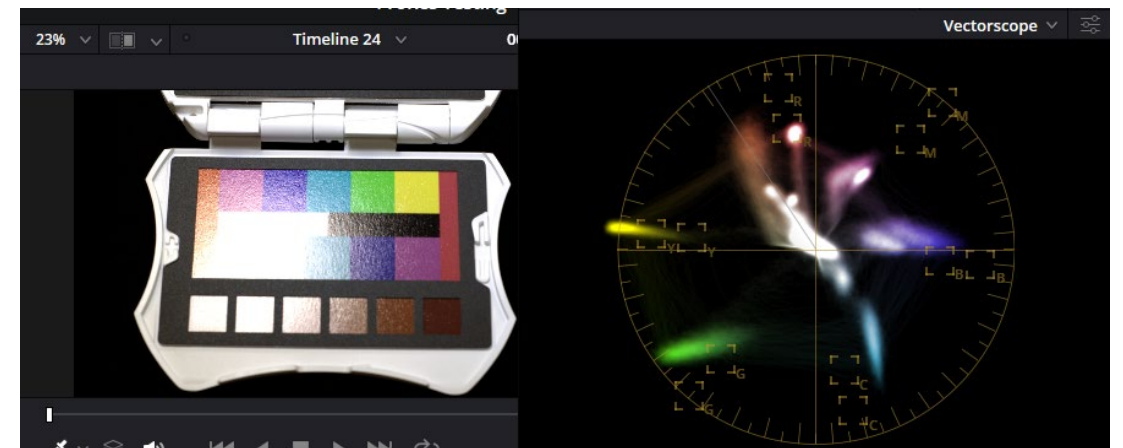
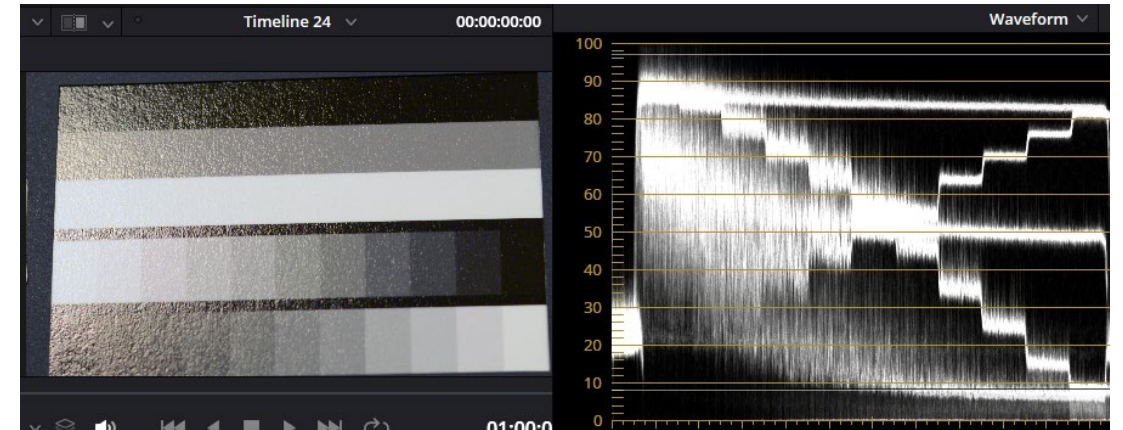
---

- In order to ensure the most accurate color calibration using the Spyder Checkr Video system, please follow these steps:
  - Choose a frame with the chart in focus and without any flaring.
  - Correct White Balance
  - Adjust Exposure levels using a waveform monitor
  - Adjust colors using a vectorscope
  - Apply the correction to the remaining footage from that camera.
- Repeat this process for each camera and after each scene or lighting change



## Important Notes - Flaring

- The Spyder Checkr Video cards have a high-gloss finish, so that flares and reflections can be easily identified and removed.
  - The examples at right show the effect of flaring on the cards
- In order to get the most accurate color information, change the angle or reposition the cards so that they are exposed to your lighting without showing any flares.





# Neutral Grey Balance Card

---

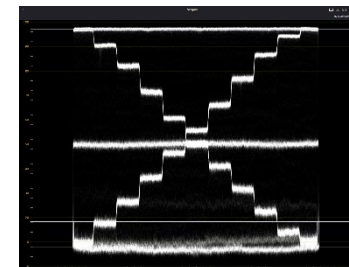
- The neutral grey balance card provides a larger, neutral target ideal for white balancing.
- When white balancing your camera, ensure that this card fills the frame or sample area.





# Gray Scale Card

- This card is designed to give accurate reference points for both exposure and contrast levels.
- For best results, we recommend adjusting your image using the large bar levels first, then working with the gray scale for fine-tuning.



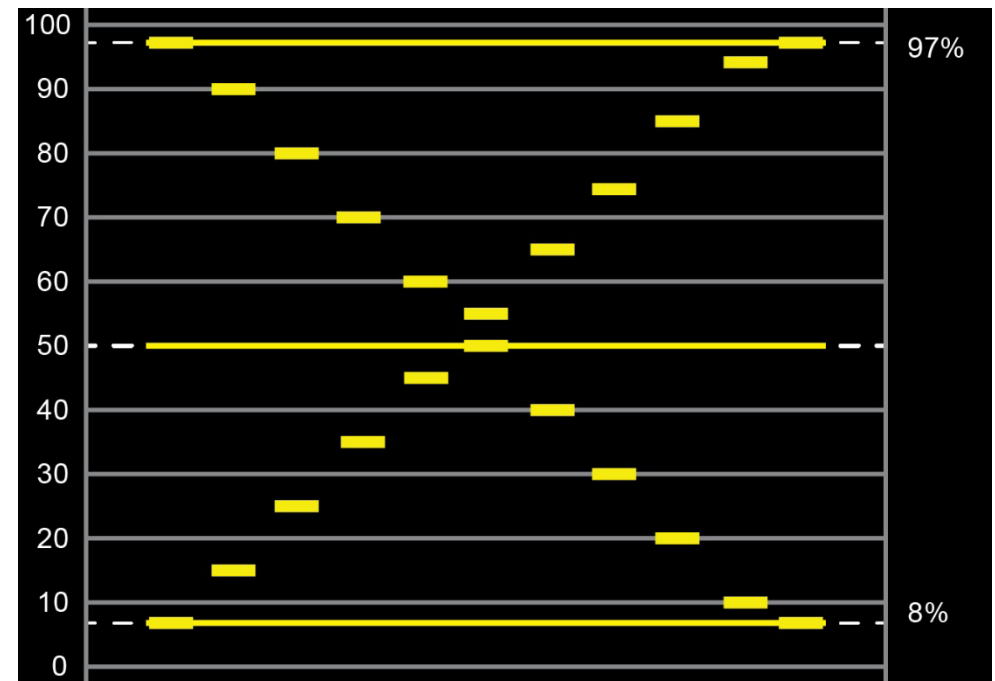
# Gray Scale Card

- Card split into two sections main sections
  - 3 Large Bars
    - White: 95%-98%
    - 50% Gray: 50%
    - Black: 5% - 8%
  - 22-Step gray scale
    - Each patch represents a 10% change
    - Each bar is offset by 5% from the other
      - Bar #1 starts from left:
        - White(97%) then 90%, 80%, etc.
      - Bar #2 starts from right:
        - 95% then 85%, 75%, etc.



# Gray Scale Card

- When the gray scale card is isolated, the pattern at the right is generated on the waveform monitor.
- The 3 large bars will provide a quick-reference for exposure.
  - In the field, the stair-stepping pattern to prevent clipping issues.
  - In post, use the same pattern to ensure accurate contrast



# Important Notes

---

- All Color cards are intended to be used in Rec.709 color space.
- When using a raw format for capture, gamut compression may be necessary. Different camera systems may offer different results.





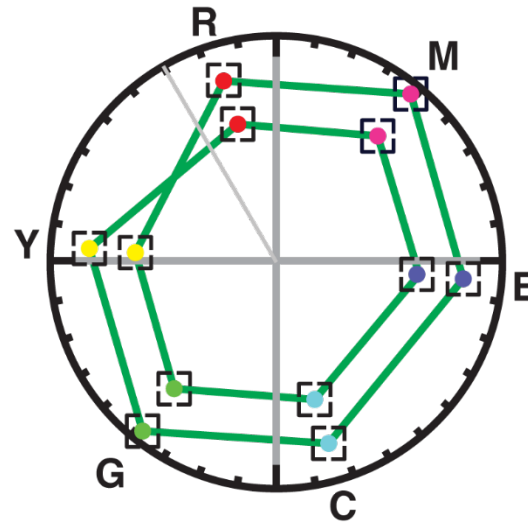
# Color Cards

- The Spyder Checkr Video includes two color cards that provide all the information you need to color correct your footage:
  - 12 color patches (6 hues at two saturation levels)
    - *These saturation levels correspond with the 100% and 75% on a vectorscope at 2x zoom factor.*
      - H = High Saturation (100%)
      - L = Low Saturation (75%)
  - 6 Skin tone patches (S1 – S6)
  - 3 neutral patches for use with waveform monitors
- *The only difference between the Pattern card and the Patch card is the effect that when viewed with a vectorscope*



# Color Pattern Card

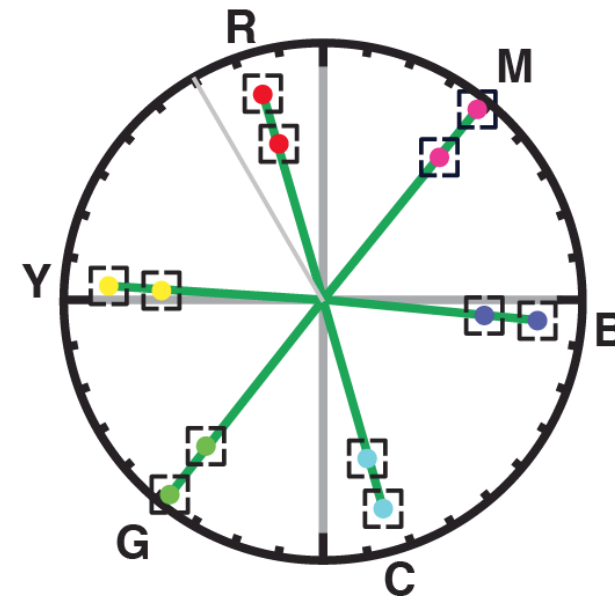
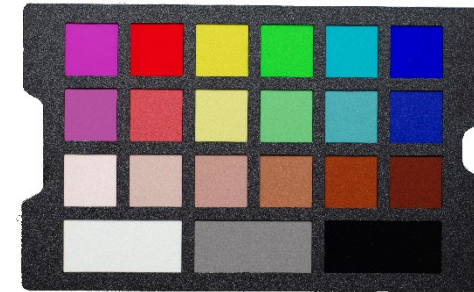
- The color pattern card uses our new **patent-pending** design to help make color correction using vectorscopes easier to understand.
  - To properly generate this pattern, the card must be captured in the orientation shown at right.
- Each color has two patches at different saturation levels.
  - *If you can't match the two different color patches into the target boxes, correct to the lower (75%) saturation level.*
- Adjust the hue and saturation levels for each color so that they match the graph at right.



*Rec.709, x2 zoom*

# Color Patch Card

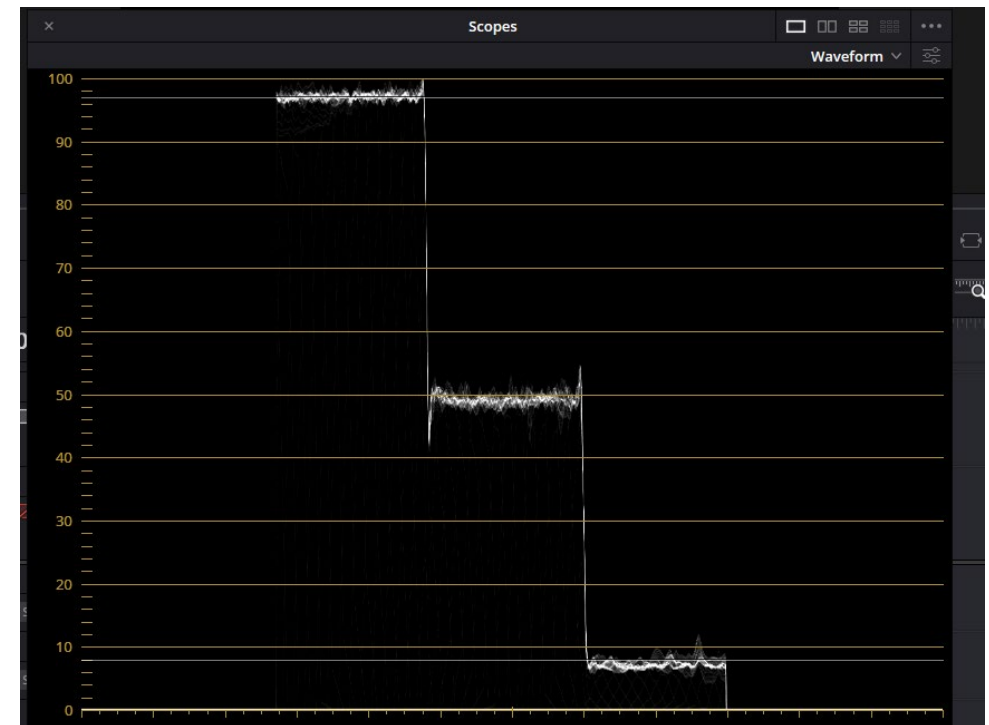
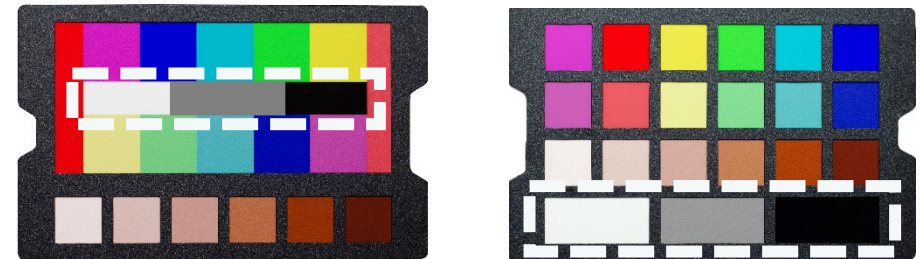
- The color patches on this card are the exact same color values as the color pattern card.
- This card uses the traditional patch layout and will create the individual vectors shown at right.
- Follow the same process described in the previous slide for color correction.



*Rec.709, x2 zoom*

# Color Card

- If you're only using a color card for correction:
  - Adjust output levels using the three neutral bars (outlined in white).
    - To make it easier to view on the waveform monitor, crop / isolate just these bars.
  - Adjust levels to match the example at right.
  - Once these levels are set correctly, change the image crop to show all the colors on the card and continue to the next step







**datacolor** 

*Get Color Right*

Thank You!

For additional support, please visit:

<https://spyder-support.datacolor.com/>